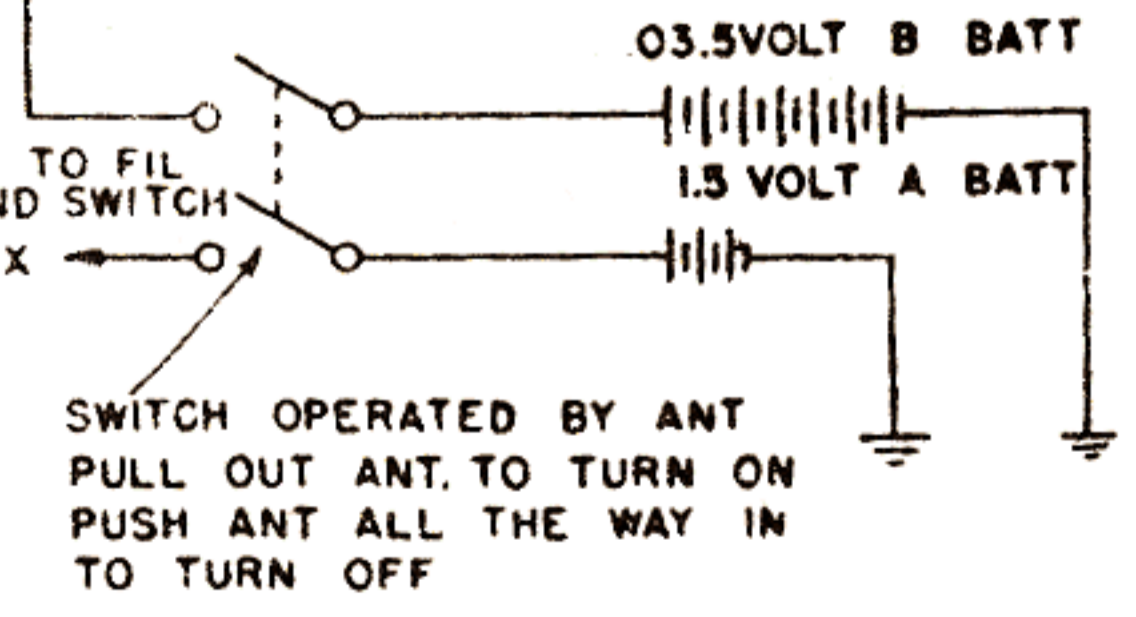
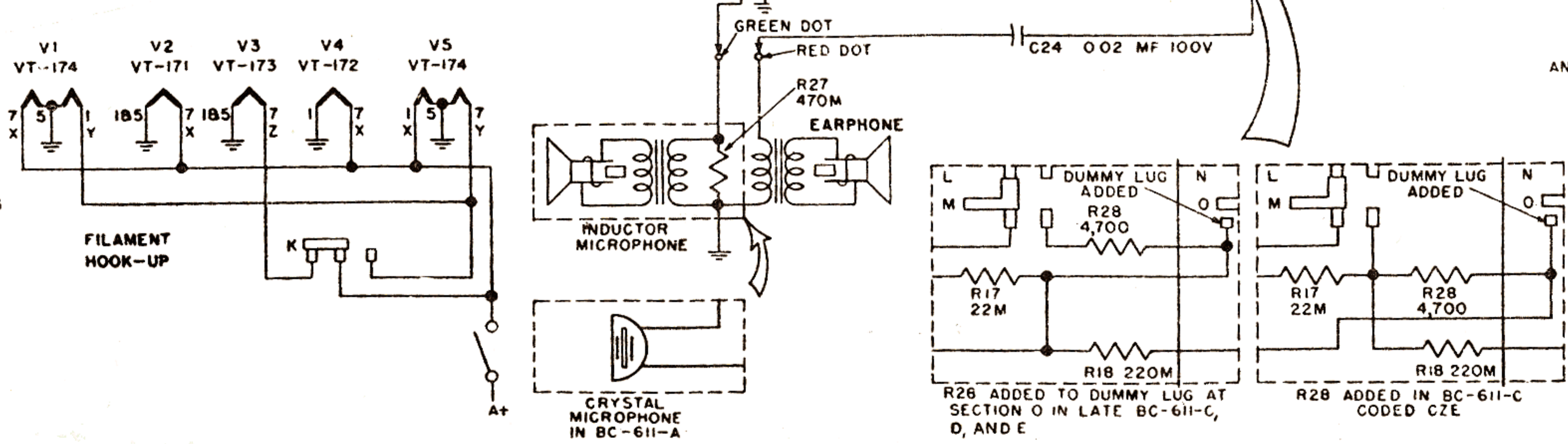


**NOTE**

⊢ IS SYMBOL FOR FIXED CAPACITOR  
 ⊢ IS SYMBOL FOR VARIABLE CAPACITOR

M=1,000Ω  
 ALL RESISTORS ARE 1/4 WATT  
 ALL CAPACITOR RATINGS ARE DC WORKING VOLTAGES

\* SWITCH SECTIONS E AND F ARE TRANSPOSED ON SETS CODED GZE  
 REFERENCES IN PARENTHESES REFER TO BC-611-A AND BC-611-B



SWITCH OPERATED BY ANT  
 PULL OUT ANT. TO TURN ON  
 PUSH ANT ALL THE WAY IN  
 TO TURN OFF

# BC-611 Transceiver

